

# School Visits Information & Booking Form



Welcome to Adventure Valley's Information and Booking Form for  
Educational Visits for Schools 2012/2013!

## Contents

Page No

2. An introduction to Adventure Valley
3. Learning Opportunities and Prices
4. Educational Packages
5. Sample School Itinerary
6. How to Book
7. School Booking Form
8. Health & Safety Guidelines
10. HSE Information Sheet
11. Farms For Schools – Charter Of Good Practice Certificate
12. Access to Farms – Countryside Educations Visits Accreditation Scheme Certificate
13. Visit England – Quality Assured Visitor Attraction Certificate
14. Curriculum opportunities
15. Web Links

Adventure Valley  
Union Hall Farm  
Brasside  
Durham DH1 5SG  
Tel: 0191 386 8291  
Email: [info@adventurevalley.co.uk](mailto:info@adventurevalley.co.uk)  
Web: [www.adventurevalley.co.uk](http://www.adventurevalley.co.uk)



# Introduction to Adventure Valley



## An Introduction to Adventure Valley

Has your school visited Adventure Valley yet? Split into 6 zones (with 3 undercover), there's always something exciting to discover, come rain or shine. **Educational Packages are only available Monday to Friday during term time and in December, only Santa visits are available.** If you wish to visit as a group outside these times, please refer to our special group brochure.

### Undercover Fun

#### Indoor Play Town

Huge and heated! Whoosh down the Astra Slide, scramble nets and clamber through tunnels. We also have a separate toddler zone.

#### The FarmYard

Meet friendly animals, housed within their cosy barns! Every day you can get involved with scheduled activities.

#### Busy Bee's Barn

Lots of play with a Cannon Ball Saloon, giant sandpit and roller racers.

### Outdoor Adventure

#### Action Creek

Jumping Pillows, Go Karts and Outdoor Play! Board the Barrel Train Ride and Tractor and Trailer Ride. Plus, Pony Rides have moved here.

#### Runaway Ranch

Zoom down Runaway Races, or fly like an eagle on the Zip Wire. From Easter, take part in Sheep Racing and win a prize.

#### The Piazza

Surrounding the Piazza there's Panning for Gold, a Mini Football Pitch and Pedal Tractors for the little ones.

### Café Italia

The traditional Italian Restaurant, Café Italia offers the very best in refreshments. From tasty cappuccinos to delicious paninis and freshly made pizzas, the choice is yours.

On sunny days, you can also relax on the terrace and enjoy the wonderful view over Adventure Valley.

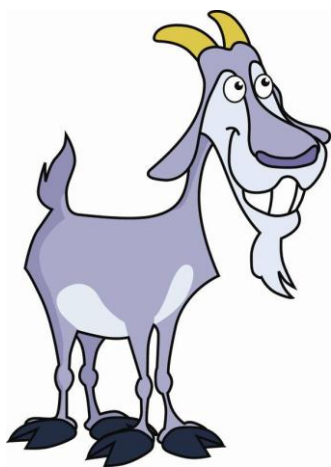
We also have several picnic areas for you to enjoy at Adventure Valley.



# Learning Opportunities & Prices



## Learning Opportunities for Schools



With education, fun and adventure, Adventure Valley offers a new and fun way of learning for schools! Our educational packages are suitable for children from pre-school to Key Stages 1 and 2.

There's a range of learning activity packages, all of which are tailored to the individual needs of the group. In addition, our packages support the National Curriculum and cover areas such as science, geography, literacy, design and technology. We aim to make your day as interactive as possible and our activities always include question and answer sessions.

Adventure Valley is a member of **Farms For Schools**. Visit [www.farmsforschools.org.uk](http://www.farmsforschools.org.uk) for more information.

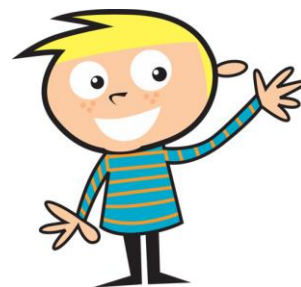
## Packages & Prices

Adventure Valley's educational packages are only available Monday to Friday during term time and in December, only Santa visits are available. If you wish to visit as a group outside these times, please refer to our Group brochure, also downloadable at [www.AdventureValley.co.uk](http://www.AdventureValley.co.uk).

For school groups of 20 or more paying people, educational packages range from £4.95 to £5.75 per child, with additional Keys Stage 1 and Key Stage 2 upgrades.

All packages include:

- 1 Free Adult per 5 Paying Children (Up to the Age of 8) or 2 Free Adults per 4 paying SEN Children
- Free Risk Assessment Pre-Visit for 2 Teachers
- Access to all public areas of Adventure Valley (subject to weather)
- Free coach and car parking
- Use of our outdoor picnic areas or party rooms for lunch\*



### Pre-order Goodie Bags & Refreshments:

Pre-order your Adventure Valley Goodie bags from gift shop. Just £1 each, they include an Adventure Valley branded Pencil, Eraser and Notebook.

Plus pre-order your refreshments with Café Italia. Contact us for more details and prices.

\* Use of Party Rooms will be subject to an additional £10 charge to cover the cost of cleaning.

# General Educational Packages



Adventure Valley educational packages are only available Monday to Friday during term time. If you wish to visit as a group during a weekend or during a school holiday, please refer to our Groups brochure, also downloadable from [www.AdventureValley.co.uk](http://www.AdventureValley.co.uk)

## Package 1 – Become an Adventure Valley Farmer £5.95 per Child



Becoming a farmer is so exciting! Lasting approximately 1 hour, your guide will show you all The Farm Yard has to offer. Children will be able to participate in a range of hands-on activities\*, which may include up to 3 of the following: lamb bottle feeding, meet the reptiles, mini beasts or rodents, pony grooming, or rabbit/guinea pig care.

After lunch, they will be taken on an exciting Tractor Trailer ride, before spending the rest of their day exploring indoor and outdoor adventure play (at the teachers discretion).

## Package 2 – Become an Adventure Valley Chef £5.95 per Child

Learning tastes delicious with Adventure Valley's Pizza Making Class! Lasting approximately 1 hour, children will learn where Pizza ingredients come from, how to make dough and design their own pizzas. Our real chef will then cook the pizzas for lunch in our traditional pizza oven! Delicious!



After lunch, the rest of the day will be spent exploring Adventure Valley, at the teachers' discretion.

## Package 3 – The Freedom Package £4.95 per Child



School Groups who don't want a host but want to explore all Adventure Valley has to offer will love the Freedom Package.

It includes a Tractor and Trailer ride, as well as access all indoor and outdoor adventure play and participation in Adventure Valley's Daily Activity Schedule.

## Package 4 – Become A Birds Of Prey VIP £5.95 per Child (minimum group size of 25 children)



The Bird of Prey VIP Package is where children can enjoy an exclusive demonstration, alongside a 'meet and greet' session. They will find out about their natural habitat, what they eat and watch the amazing Bird-O-Batics show. On the day, the school groups can explore the Farm Yard, take a Tractor and Trailer ride and participate in Adventure Valley's Daily Activity Schedule.

\* Hands-on Activities are seasonal and subject to availability of animals and weather conditions. If you have a preference for certain activities, please state these on your booking form and we will endeavor to meet your request.

# Sample School Trip Itinerary



## **Example – Become an Adventure Valley Farmer**

All school visits to Adventure Valley are tailored to meet your individual requirements. However, a typical school itinerary for “Become an Adventure Valley Farmer” may be:

**10.00am**

On arrival you will be met by your guide for the day who will give your group a short health and safety talk and explain where all facilities, including toilets, are on site.

**10.15am**

A tour of The Farm Yard including your chosen activities, followed by a Question and Answer session and free time around the Farm Yard.

**11.45am**

Hands Washed/Application of Anti-bacterial Gel followed by Lunch.

**12.45pm**

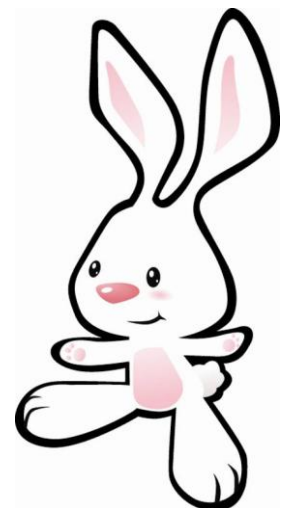
Tractor & Trailer Ride

**1.15pm**

Time spent at teacher’s discretion exploring Adventure Valley including Action Creek, Runaway Ranch, the Piazza, Busy Bees Barn and Indoor Play Town.

**2.45pm**

Departure from Adventure Valley



# How to Book



Booking your school visit to Adventure Valley is simple.

Simply follow the 4 easy steps below:

1. Please contact us by telephone on **0191 386 8291** or email **info@adventurevalley.co.uk** with your preferred visit dates. We will agree a visit date with you, and discuss any requirements.
2. Please note these educational packages are only available Monday to Friday during term time. In December, please note only Santa Visits are available for Schools.

The Group booking form and group rates apply at weekends and during every School & Bank Holiday. Please download the group booking form and information for visits on these dates.

3. To secure your booking, you must complete and return this booking form to **Adventure Valley, c/o Union Hall Farm, Brasside, Durham, DH1 5SG** with a non-refundable deposit of £20 or £2.00 per child, whichever is the greater.
4. We recommend that at least 1 teacher undertakes a Risk Assessment and familiarisation visit to Adventure Valley before your school trip.
5. **On the day of your visit, please ensure that you have your payment available to us.** Cheques should be made payable to Adventure Valley. Please ensure that all teachers and helpers have been given copies of the Health & Safety Guidelines included in this document.

Enjoy your visit and do not hesitate to contact us should you require any further information.

# Booking Form For Schools



## School Details:

Name of School:	
School Email:	
Address & Postcode:	
Phone Number:	
Contact Name:	

## The Visit:

Date of Visit:	Age of Children:	Arrival Time: Dept Time:
----------------	------------------	-----------------------------

## Packages Required. (Valid Mon-Fri in term time for pre-booked schools of 20 or more paying people)

Package Option Required.	No of Paying Children	No of FREE Adults*	No of Extra Adults £4.95 each
1 - Adventure Valley Farmers*** (£5.95 per child)			
2 - Adventure Valley Chefs** (£5.95 per child)			
3 - Freedom Package (£4.95 per child)			
4 - Birds of Prey VIP (£5.95 per child) MINIMUM 25 CHILDREN			

\*One Free adult is admitted per 5 paying children & 2 Free adults are admitted for 4 paying SEN children.

\*\*If you have any special dietary requirements for pizza making, please call us to discuss.

\*\*\* We endeavour to cater for all requests, however, when you work with animals nothing is certain and in the event of poor weather, some activities change on the day.

<b>Optional Extras</b>	
Use of Party Room For Lunch (£10 Cleaning Charge)	Please tick if required:
Pre-bookable Goodie Bags (£1 each)	Please indicate number of Goodie Bags required:

Signed:	On Behalf of:
---------	---------------

Don't forget to include your deposit of £20 and return to Adventure Valley, Union Hall Farm, Brasside, Durham, DH1 5SG

# Health & Safety Guidelines



We want you to have a fabulous day out at Adventure Valley and to help you to do this we ask that you follow our Health & Safety Guidelines.

It is recommended that at least one teacher or group leader visit the site prior to your trip in order to carry out your own Risk Assessment. To enable you to do this, we offer a visit for up to two teachers/group leaders, FREE of charge prior to your trip (for schools or groups of 20 or more paying people).

At Adventure Valley, leading animal welfare and best practice is followed. However, wherever there are animals and adventure play, this is always a small health risk to humans.

We make sure our animals are looked after and the animal accommodation is cleaned but, as animals and waste do carry germs, these can pose a health risk. However, the risk of catching most germs on farms is eliminated by good hygiene.

It is very important that our guidelines are followed to ensure your day out is a happy and healthy one.

## GENERAL HEALTH & SAFETY GUIDELINES:

- ✿ Hands must be cleansed after touching animals or their pens. There are hand washing facilities and hand sanitisers around the farm.
- ✿ Please take note of all signs posted around the site, especially those regarding the feeding habits of the animals.
- ✿ Children must be carefully supervised at all times whilst with the animals.
- ✿ Animals should be approached quietly and carefully and treated with respect. They should only be handled when a member of staff gives permission or signs permit visitors to do so.
- ✿ When feeding animals, children should hold their hands out flat and should not put their fingers into the mouths of animals.
- ✿ Do not kiss the animals.
- ✿ Do not eat any of the animal food.
- ✿ Do not enter any animal pens or climb onto walls.
- ✿ Do not open any gates of the animal enclosures.
- ✿ Please note that some of our animals, however friendly, may bite. Extra care and attention must be taken when approaching or feeding the animals.
- ✿ Please wash any scratches or bites with soap and water and hand sanitiser. In the event of any accident or injury, First Aid will be available on site. Please inform a member of staff immediately.
- ✿ Do not eat food that has fallen on the ground or eat and drink whilst touching the animals.
- ✿ Food should be eaten at designated areas only and not in animal areas.
- ✿ Please put rubbish in the bins provided
- ✿ Thoroughly wash any children's dummies or toys before giving them back to the child if they have fallen or come in to contact with the animals.
- ✿ Children must be supervised around the pond areas and all other areas of Adventure Valley at all times.



- Suitable clothing and footwear should be worn.
- Please be aware that on wet days, some areas may be slippery. Extra care must be taken. Please also be aware the some facilities (such as Tractor & Trailer Rides, Jumping Pillows, Runaway Races) may be restricted due to weather conditions.
- It is against the law to smoke on the premises and anyone found doing so will be asked to leave.

#### **PREGNANT WOMEN:**

- If you are pregnant or suspect you may be pregnant you should keep away from any pregnant ewes and new born lambs. This is to avoid the transfer of micro-organisms that can cause illness. There will be signs around the site to advise this.

#### **MINIMUM ADULT TO CHILD RATIO:**

- All children must be supervised at all times (we cannot be held responsible for any loss or accident that may occur).

Based on HSE Guidelines, it is recommended that the ratio of children to supervisors, teachers, assistants and parents should be:

- 1:1 Children under 1 year old
- 1:2 Children between 1 and 2 years old
- 1:3 Children between 2 and 3 years old
- 1:4 Children between 3 and 5 years old
- 1:8 Children between 5 and 8 years old

If supervision levels are less than this, there should be no direct contact with animals.

#### **RISK & LIABILITY:**

- You are welcome to use the adventure playground, jumping pillows, slides, go karts and all other facilities at Adventure Valley at your own risk.
- We cannot accept any liability for any loss, damage or injury to persons or property, however caused.
- Children are your responsibility for the duration of the visit.



# Avoiding ill health at open farms – Advice to teachers

## HSE information sheet

### AIS23 Supplement (revised)

This supplement to AIS23 *Avoiding ill health at open farms – Advice to farmers* advises teachers and others who organise visits for children to farms on controlling the risk of infections from the animals the children may contact during their visit.

All animals naturally carry a range of micro-organisms, some of which can be transmitted to humans, where they may cause ill health. Some infections which may be contracted on farms, such as the bacterium *Escherichia coli* O157 (*E coli* O157) and also more recently *E coli* O26), present a serious hazard and potentially cause severe disease which may be particularly acute in young children.

While the hazard from infection resulting from a farm visit is real, the risks are readily controlled by everyday measures. The following sensible steps will help make your visit even more safe, healthy and enjoyable.

#### Before your visit:

- read and understand the advice in the main AIS23 information sheet, and discuss visit arrangements with the farm management. Assure yourself that the facilities provided match the recommendations in AIS23;
- complete a risk assessment which will help you to decide the appropriate level of adult supervision for the group. Staffing ratios for visits are difficult to prescribe as a range of factors need to be taken into account including the age, ability and characteristics of the group, the mode of travel, the nature of the activities planned, and the experience of the teachers and other adults in off-site supervision. In addition to the teacher in charge, there should be enough supervisors to cope with an emergency. Further advice may be obtained from your local education authority or the Department for Children, Schools and Families ([www.lotc.org.uk](http://www.lotc.org.uk));
- discuss with the supervisors, who may be parents or staff of the school, creche etc, their role during the visit. They must understand the need to make sure that the children wash, or are helped to wash, their hands thoroughly after contacting animals, and follow the other rules suggested below;
- discuss with pupils the rules for the visit, stressing that they must not eat or chew outside the areas in which you permit them to do so;
- make sure that pupils wear appropriate clothing, including sturdy outdoor shoes (not sandals) or wellington boots if possible;
- check that cuts, grazes etc on children's hands are covered with a waterproof dressing.

During and after the visit, make sure that the children:

- do not kiss animals;
- always wash their hands thoroughly before and after eating, after any contact with animals and again before leaving the farm;
- eat only food that they have brought with them, or food for human consumption they have bought on the farm, in designated areas, and never eat food which has fallen to the ground, or taste animal foods;
- do not suck fingers or put hands, pens, pencils or crayons etc in mouths;
- clean or change their footwear before leaving, remembering to wash their hands after any contact with animal faeces on their footwear.

Check that the children stay in their allocated groups during the visit, and that they:

- do not use or pick up tools (eg spades and forks) unless permitted to do so by farm staff;
- do not climb on to walls or animal pens etc;
- listen carefully and follow the instructions and information given by the farm staff;
- approach and handle animals quietly and gently;
- do not chase, frighten or torment the animals.

Remember:

- the children are your responsibility during the visit;
- you should supervise them during the visit, especially during hand washing to make sure that each child washes and dries their hands thoroughly. Farm staff may be able to help with this supervision;
- allow plenty of time before eating or leaving so that the children do not have to rush.

If a member of your group shows signs of illness (eg sickness or diarrhoea) after a visit, advise them or their parent/guardian to visit the doctor and explain that they have had recent contact with animals.

#### Further information

Extra copies of this information sheet and supplement are available free from HSE Books, PO Box 1999, Sudbury, Suffolk CO10 2WA. Tel: 01787 881165 Fax: 01787 313995. Website: [www.hsebooks.co.uk](http://www.hsebooks.co.uk)

# Charter of Good Practice 2011



This is to certify that

**- Adventure Valley, Union Hall Farm, Brasside, Durham -**  
is a member of The National Association of Farms for Schools

and has signed up to a Code stating that their farm/horticulture unit meets the following requirements:-

- They have a **Health & Safety Policy** and are registered with the relevant **Health & Safety Executive** and **Environmental Health Office**, in accordance with local policy
- They possess current **Public Liability Insurance** (and where appropriate **Employers' Liability Insurance**)
- They have adequate toilet and hand washing facilities available for the expected number and type of visitors, in accordance with **HSE Guidelines (HSE Information Sheet No 23 Avoiding Ill Health at Open Farms – Advice to Teachers)**
- **Farms with livestock** are attended by a **Veterinary Surgeon** at least once every **12 months**
- **Sufficient coach/car parking** is available for the anticipated number of visits
- **Undercover facilities** are available for wet weather
- They are subject to **random inspections by the Association**

Any queries or comments should be addressed, in the first instance, to the owner or manager of these premises

Signed:

*Gary Richardson*  
(Gary Richardson, Chief Executive)

This Certificate is valid until 31 December 2011

Farms For Schools, PO Box 8, Hebbden Bridge, HX7 5YJ Tel: 01422 885666  
[www.farmsforschools.org.uk](http://www.farmsforschools.org.uk)

Reg No 1997554 Registered in England & Wales Reg Office: Unit 4F, Top Land Country Business Park, Cragg Road, Mytholmroyd, West Yorks, HX7 5RW




Farms for Schools  
is a division of

*Access To Farms  
acknowledges the achievement  
of*

*Janine Calzini*

*in gaining all 9 credits of the  
Countryside Educational Visits  
Accreditation Scheme*

Signed  Date: 12 March 2009  
Chair of ATF



8035744



VisitEngland®

**Quality Assured Visitor Attraction**

## **Adventure Valley**

---

Has been awarded accreditation as part  
of VisitEngland's Visitor Attraction Quality  
Assurance Scheme

**2010**

---

Penelope, Viscountess Cobham  
Chair, VisitEngland



# Curriculum Opportunities

There are many ways in which farming and growing can enrich the curriculum. Some examples have been provided by the Department for Education and Skills initiative called *Growing Schools*.

## Art & Design

- Animals and plants in design
- Photography
- Natural and chemical dyes

## Geography

- Human influences on the environment
- Farming in different parts of the world
- Water cycle

## History

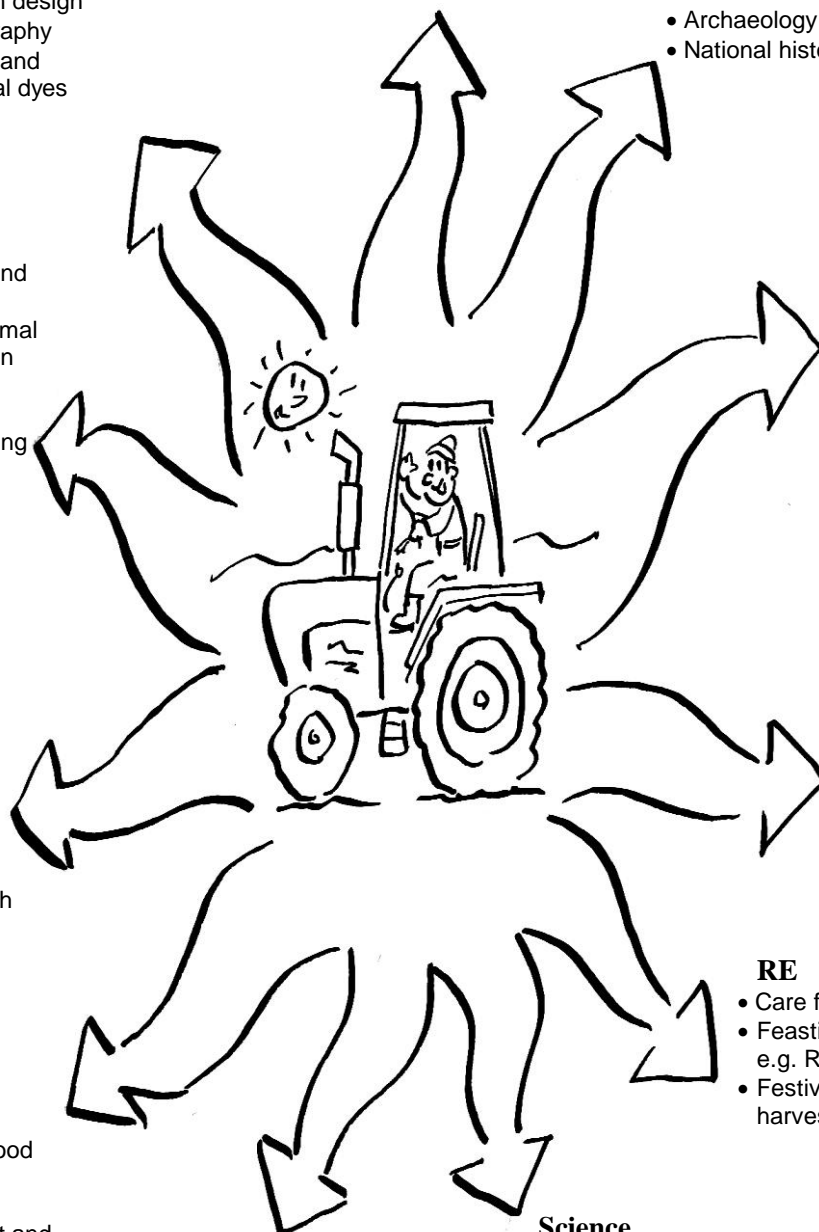
- History of farming
- Dig for Victory
- Historical farm and garden implements
- Archaeology
- National history/battle sites

## Drama

- Animal masks and puppets
- Role-play farmers/gardeners work
- Enacting life cycles and food chains

## English

- Looking at topical issues, e.g. battery/free range; organic farming and growing
- Reading and writing animal stories and poems
- Keeping a garden diary



## ICT

- Designing maps and equipment
- Testing out an animal house or protection for plants
- Producing a farm booklet or gardening calendar

## PE

- Animal movements
- Eating and health

## PSHE & Citizenship

- Where our food comes from
- Sustainable development and planting at school

## Mathematics

- Measuring wind speed and rainfall
- Measuring growth in plants and animals
- Collecting data

## Science

- Seasonal changes
- Life processes
- Habitats
- Food chains
- Care of living things

## RE

- Care for our world
- Feasting and fasting, e.g. Ramadan, Eid
- Festivals, e.g. harvest, Easter

# Useful Weblinks



Please find below a selection of useful links to assist you in planning your day.

[www.farmsforschools.org.uk](http://www.farmsforschools.org.uk)

[www.face-online.org.uk](http://www.face-online.org.uk)

[www.hse.gov.uk/pubns/agindex.htm](http://www.hse.gov.uk/pubns/agindex.htm)

[www.nfuonline.com](http://www.nfuonline.com)

[www.countrysideaccess.gov.uk](http://www.countrysideaccess.gov.uk)

<http://publications.teachernet.gov.uk>

[www.growingschools.org.uk](http://www.growingschools.org.uk)